

# Emotive Agents

Guillaume Gadek, 1130918  
ISEP

May 29, 2014

# Computers don't have feelings

Because:

- No heart, no brains, no guts
- Only a cold machine

# Computers don't have feelings

Because:

- No heart, no brains, no guts
- Only a cold machine

However, we'll give them emotions

# Computers don't have feelings

Because:

- No heart, no brains, no guts
- Only a cold machine

However, we'll give them emotions

How?

# Computers don't have feelings

Because:

- No heart, no brains, no guts
- Only a cold machine

However, we'll give them emotions

How?

Why?

# How? Labels

You decide of its emotions

# How? Labels

## You decide of its emotions

- My agent will be upset if it fails its negotiation.
- My agent will be happy if it gets the auction.

# How? Labels

## You decide of its emotions

- My agent will be upset if it fails its negotiation.
- My agent will be happy if it gets the auction.
- My agent will look for other trade partners if it's upset.
- My agent will increase its exigences if it's happy.



# How? Labels

## You decide of its emotions

- My agent will be upset if it fails its negotiation.
- My agent will be happy if it gets the auction.
- My agent will look for other trade partners if it's upset.
- My agent will increase its exigences if it's happy.

Easy to implement, but rather selective.

# How? Labels

## You decide of its emotions

- My agent will be upset if it fails its negotiation.
- My agent will be happy if it gets the auction.
- My agent will look for other trade partners if it's upset.
- My agent will increase its exigences if it's happy.

Easy to implement, but rather selective.

# How? Labels

What if you want more variations ?

# How? Labels

## What if you want more variations ?

- My agent will be totally upset if ...
- My agent will be upset enough if ...
- My agent will be angry if ...
- My agent will be revengeful if ...
- My agent will be hateful if ...

# How? Labels

## What if you want more variations ?

- My agent will be totally upset if ...
- My agent will be upset enough if ...
- My agent will be angry if ...
- My agent will be revengeful if ...
- My agent will be hateful if ...

Let's shift to continuous values.

# How? Valence and arousal

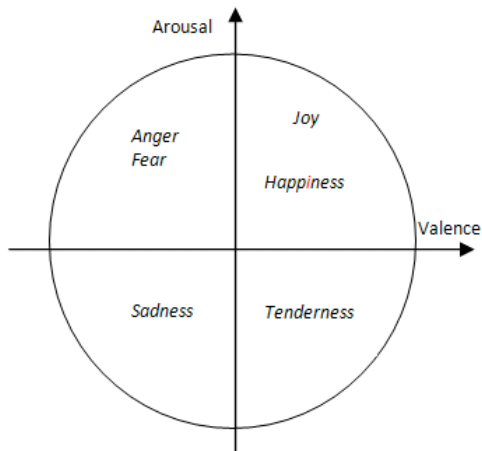


Figure : Valence-arousal graph from [Kirke & Miranda, 2013]

# How? Valence and arousal

- Current emotional state: coordinates of the valence-arousal state

# How? Valence and arousal

- Current emotional state: coordinates of the valence-arousal state
- Stimuli: attracting the agent towards a point of the graph



# How? Valence and arousal

- Current emotional state: coordinates of the valence-arousal state
- Stimuli: attracting the agent towards a point of the graph
- Reactions: impacts on behaviour according to current emotional zone

# How? Valence and arousal

- Current emotional state: coordinates of the valence-arousal state
- Stimuli: attracting the agent towards a point of the graph
- Reactions: impacts on behaviour according to current emotional zone

# How? Valence and arousal

- Current emotional state: coordinates of the valence-arousal state
- Stimuli: attracting the agent towards a point of the graph
- Reactions: impacts on behaviour according to current emotional zone

Necessity to give accurate and fixed values to every element...

# How? Appraisal

## How are emotions influenced?

- an event may produce emotions
- the same event occurring at different times may produce different emotions
- importance of current emotion state

# How? Appraisal

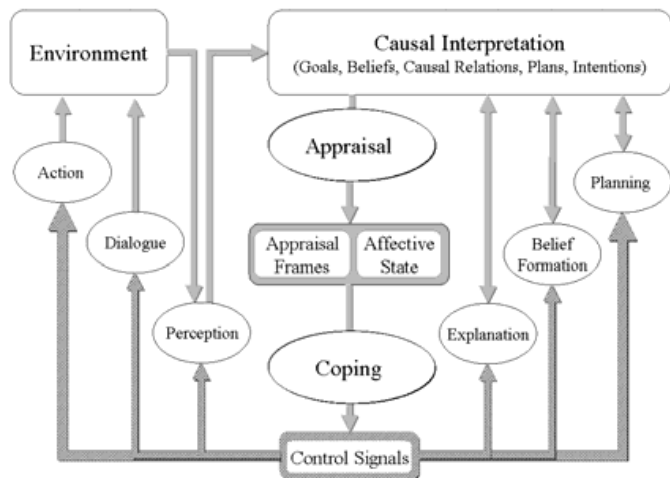


Figure : Appraisal graph from [Gratch & Marsella, 2005]

# Why? Poems

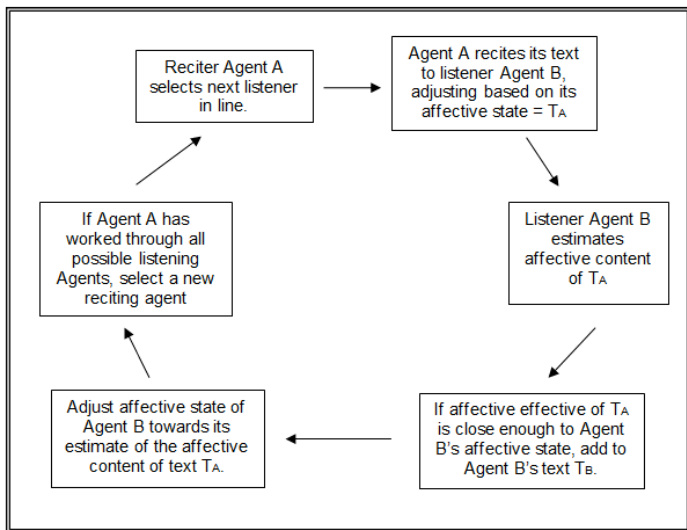


Figure : A cycle of writing [Kirke & Miranda, 2013]

# Why? More autonomous agents

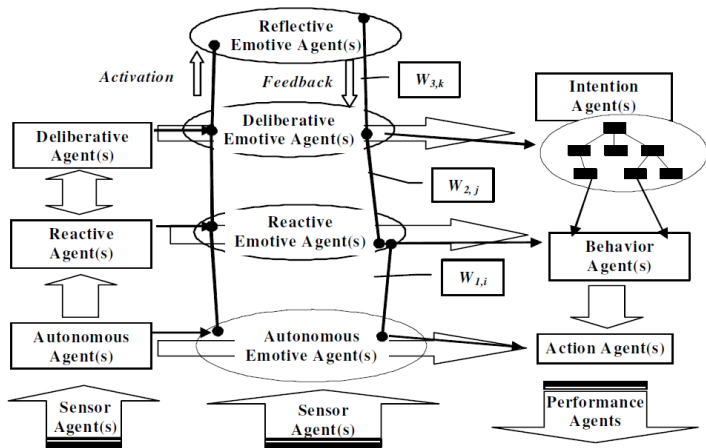


Figure : A model of emotive agent [Davis & Lewis, 2003]

# Conclusion

To give emotions to agents:

- is important when directly dealing with people



# Conclusion

To give emotions to agents:




- is important when directly dealing with people
- may improve the social aspects of MAS

# Conclusion

To give emotions to agents:

- is important when directly dealing with people
- may improve the social aspects of MAS
- totally depends on the problem

# Bibliography I

-  AMMAR, MOHAMED BEN, NEJI, MAHMOUD, & ALIMI, ADEL M. 2005.  
Emotional multiagents system for peer to peer e-learning (emaspel).  
*Pages 164–170 of: Proceedings of the 5th wseas international conference on distance learning and web engineering table of contents.*
-  DAVIS, DARRYL N, & LEWIS, SUZANNE C. 2003.  
Computational models of emotion for autonomy and reasoning.  
*Informatica (slovenia)*, **27**(2), 157–164.
-  DYBALA, PAWEL, PTASZYNSKI, MICHAL, RZEPKA, RAFAL, & ARAKI, KENJI. 2009.  
Humoroids: conversational agents that induce positive emotions with humor.  
*Pages 1171–1172 of: Proceedings of the 8th international conference on autonomous agents and multiagent systems-volume 2.*

# Bibliography II

International Foundation for Autonomous Agents and Multiagent Systems.



GRATCH, JONATHAN, & MARSELLA, STACY. 2005.

Evaluating a computational model of emotion.

*Autonomous agents and multi-agent systems*, **11**(1), 23–43.



KIRKE, ALEXIS, & MIRANDA, EDUARDO. 2013.

Emotional and multi-agent systems in computer-aided writing and poetry.

*Pages 17–22 of: Symposium on artificial intelligence and poetry.*



LAZARUS, RICHARD S. 1982.

Thoughts on the relations between emotion and cognition.

*American psychologist*, **37**(9), 1019.

# Bibliography III



SILVERMAN, BARRY G. 2001.

More realistic human behavior models for agents in virtual worlds: emotion, stress, and value ontologies.



ZIFF, PAUL. 1959.

The feelings of robots.

*Analysis*, **19**(3), 64–68.

End of the slideshow

Thanks for your attention.

Guillaume Gadek, 1130918